

 Edison Coatings, Inc.

AQUA-SPEX 220

MULTI-COLOR SPECIAL EFFECTS FINISH SYSTEM



AQUA-SPEX 220

MULTI-COLOR SPECIAL EFFECTS FINISH SYSTEM

DESCRIPTION

AQUA-SPEX 220 is a specialty coating system designed to provide multi-color finishes in a single, simple application. They are based on clear, high-performance, highly durable, water-borne polyurethane coatings into which color specks of varying sizes and colors have been dispersed.

AQUA-SPEX 220 is low in odor, VOC-Compliant, non-flammable and fast drying. It is available in gloss, satin or flat finishes. It is a single component, UV-stable coating that cures to tough, flexible films which resist abrasion, and intermittent exposure to water and many chemicals.

APPLICATIONS:

Applications for **AQUA-SPEX 220** include:

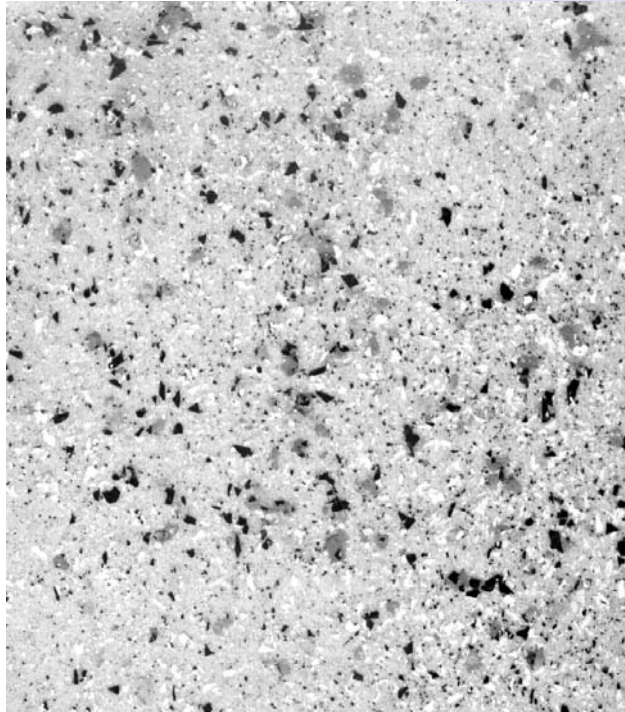
- Speckled Terra Cotta Glaze Replication
- Multi-Colored Finishes to Imitate Granite
- Decorative Coatings for Wood, Stone, Masonry and Concrete
- Over Many Previously Coated Surfaces

HOW DOES AQUA-SPEX 220 WORK?

1. Background: The underlying substrate provides the background color. The extent to which background color appears is determined by the concentration of the color flakes suspended in the particular **AQUA-SPEX 220** formula used.

2. Matrix: Clear **AQUA-SPEX 220** is a one-component waterborne coating which is available in gloss, satin or flat finishes. It is fully compatible with stone, masonry, concrete, **Custom System 45** and **Thin Fill 55** patching compounds, and **Elastowall 351**, **Expo 43** and **Elasto-Tone 353** breathable masonry coatings. It can be applied directly to porous substrates or can be bonded to glazed brick, terra cotta and polished stone with the use of Edison **Type G Bonding Additive**.

*Photo: Shown in actual size, this **AQUA-SPEX 220** panel was produced using **Custom System 45** in a limestone color as the substrate. This particular custom blend includes white spex in 250 and 1000 micron size, black spex in 250 and 1000 micron size, and grey specs in the 1500 micron size.*



3. Color: Color is achieved by suspending color flakes in the clear matrix. The flakes can be varied in size from a tiny speck to a ¼ inch diameter. Several standard flake colors and a wide variety of custom flakes are available. Custom flake color matching is also available.

Unique finishes and effects are created by varying size, concentration and colors of the suspended color particles.

FEATURES:

- ▶ **Fast Drying:** (70°F, 50% RH)
Dry to touch: 30-60 minutes
Through dry: 60-120 minutes
- ▶ **Low odor** application permits easy use and touch-up in interior applications such as school buildings, hallways, underground structures and many institutional settings.
- ▶ **Durability:** Tough, flexible, abrasion resistant, UV stable.
- ▶ **Safety:** Non-flammable, low VOC, moderate pH; low hazard when used with adequate ventilation and when care is taken in handling to avoid eye and prolonged skin contact.
- ▶ **Adhesion:** Concrete, masonry, wood, steel, aluminum and many previous coatings. Primers or bonding additives are required for some substrates and exposures.

Limitations:

AQUA-SPEX 220 is not intended for use in continuous submersion or continuous high humidity exposures.

Application:

1. **Surface preparation:** **AQUA-SPEX 220** is supplied ready to use, and does not require thinning. Surfaces should be dust free and clean. Remove all grease, oil and other contaminants and roughen previous coatings, if required, to get good wetting of the substrate. Prior to large-scale application, particularly over plastics, questionable surfaces or previous coatings, apply an inconspicuous test area to confirm adhesion and compatibility. If adhesion is inadequate, consult Edison Coatings, Inc. regarding use of an adhesion-promoting primer.

2. **Application:** Apply **AQUA-SPEX 220** at 200-400 sq. ft./gallon by brush or roller. Apply evenly and moderately, avoiding rundown or ponding. Avoid overworking the coating, excessive agitation or pressure, and avoid whipping air into the product as this may generate foam. A second coat may be applied any time following through-drying of the first coat. Do not apply at temperatures below 50°F (10°C) or when temperature may fall below 50°F before through-drying.

NOTE: Temperature, humidity and air movement all effect drying and curing times. When working at marginal conditions, allow sufficient extra dry and cure times to compensate.

On wood surfaces, **AQUA-SPEX 220** may exhibit slight grain-raising tendencies. For smoothest finish, sand lightly between first and second coats. On natural wood surfaces, staining may be desired prior to application. While the product is compatible with many oil and waterborne stains following overnight drying, compatibility testing in an inconspicuous area is always recommended.

On steel and aluminum surfaces, abrasive cleaning is required to remove rust, loose scale or other corrosion products before coating.

3. **Curing:** **AQUA-SPEX 220** requires curing time before developing its full properties. Cure may be accelerated by heating to 175°F for 20 minutes, following drying. Do not



3 Northwest Drive, Plainville, CT 06062

Phone: (860) 747-2220 or (800) 697-8055

E-mail: edison@edisoncoatings.com

TECHNICAL DATA	
Property	Results
Composition	Waterborne Aliphatic Polyurethane with Pigmented Acrylic and Mica Flakes
Elongation	Up to 300%
Tensile Strength	4500 psi
UV Stability	DE<5 at 6000 hrs QUV
Corrosion Resistance	<u>Humidity:</u> No Effect (100°F, 100% RH, 1000 hrs.) <u>Rusting:</u> No effect (ASTM D-610) <u>Blistering:</u> No effect (ASTM D-714) <u>Loss in Gloss</u> No effect
60°Gloss, Gardner	91 (Gloss Finish)
Impact Resistance (Dir/Rev)	160/160 lb Pass

subject uncured films to heavy moisture or standing water.

4. **Storage and Handling:** KEEP FROM FREEZING. Keep container closed when not in use. Use with adequate ventilation. Avoid splashing into eyes or prolonged skin contact. Wash thoroughly after use. Clean tools and applicators immediately after use with warm water. Avoid depositing on shrubbery, windows, cars and other surfaces or property. In case of eye contact, flush with clean water for at least 15 minutes and consult physician. In case of ingestion, give water, do not induce vomiting. Keep out of reach of children. Observe all safety and handling guidelines as detailed in the Material Safety Data Sheets supplied with this product.

For Commercial and Industrial Use.

Rev.11/2006




Fax: (860) 747-2280 or (800) 697-8044

Internet: www.edisoncoatings.com

Edison Coatings products are for commercial use only. In case of defect in manufacture or packaging, materials will be replaced at no cost. No other warranty, except for such replacement, express or implied, is in effect. Any implied warranty of merchantability or fitness for a particular purpose is expressly disclaimed. Although information and advice supplied in this publication are believed to be reliable, they do not represent performance specifications and no obligation or liability is assumed for advice given or results obtained. Product formulations and performance characteristics are subject to change without notice. Other conditions and limitations may be imposed at time of sale.

AQUA-SPEX 220

TYPICAL PARTICLE SIZE RANGES

250 MICRON	650 MICRON	1000 MICRON	1500 MICRON	3000 MICRON
				

TYPICAL AQUA-SPEX CONCENTRATIONS

1%	2%	4%	8%	16%
